



taller de arte

patio de las flores

jardin 1

- 1. asamblea
- 2. arena y agua
- 3. rincón del arte
- 4. rincón de luz y sombra
- 5. lecto-escritura
- 6. construcción

jardin 2

- 1. asamblea
- 2. arena y agua
- 3. rincón del arte
- 4. rincón de luz y sombra
- 5. lecto-escritura
- 6. construcción

prejardin 2

- 1. asamblea
- 2. arena y agua
- 3. rincón del arte
- 4. rincón de luz y sombra
- 5. lecto-escritura
- 6. construcción

patio de las hojas secas

童眼看设计

幼儿园建筑

Kindergarten Design

Guntramsdorf幼儿园 Kindergarten V Guntramsdor

建筑师：g.o.y.a. ZT Ges.m.b.H.
地点：Marktgemeinde Guntramsdorf,
Rathausplatz 1, A-2353 Guntramsdorf
项目主管：Paul JE Preiss
总体规划：ARGE KS + g.o.y.a.
摄影师：Kurt Hörbst, Apfoltern 4,
A-4261 Rainbach (OÖ)

这所幼儿园位于一片引人注目的栗子树林里，它纯朴的设计宣扬的是一种开阔的空间以及与周围令人愉悦的环境之间的联系。为了满足孩子们不同的需要，该建筑作为一系列结构被组织起来，且每个结构都在视觉上与树木相连。教室围绕着一个走廊而排列，通过走廊可进入前厅，这里的落地玻璃窗展示出了环绕于周边的栗子树绝佳的景色。

教室和活动区都从由落叶松木材建造的前厅扩展出来，与建筑的外部保持着连贯性。多功能前厅通向教室和健身房，使得班级之间可以分开管理，这样，不同的活动就可以同时进行。但是，在特殊情况下，健身房和前厅之间灵活的分隔墙还可以被打开，以提供一个大型的活动室。幼儿园的内部都用落叶松木材做内墙，与周围环境和谐共处。交差层压杉木板建造的承重墙覆盖表面涂以白色亮光漆的三层杉木板。

每间教室都有一个巨大的全景窗户，透过窗户能够看到栗子树的景观。窗户与孩子们的视线齐平，低矮的窗台还可以作凳子用。

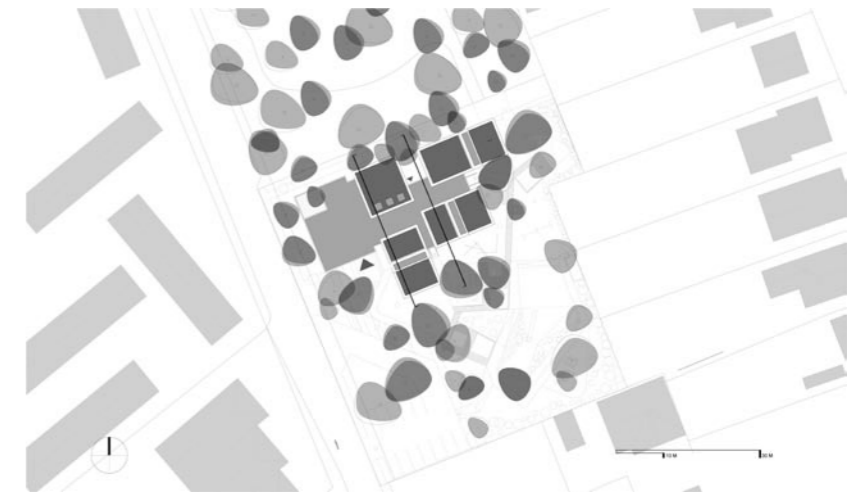
The kindergarten is located in a grove of striking chestnut trees. Its rustic design celebrates a sense of open space and connection with its lovely environment.

To meet the various needs of the children, the building is organised as a series of structures, and each connected visually with the trees. Classrooms are organised around a hallway which gives onto a foyer affording floor to ceiling panoramic views of the encircling chestnuts.

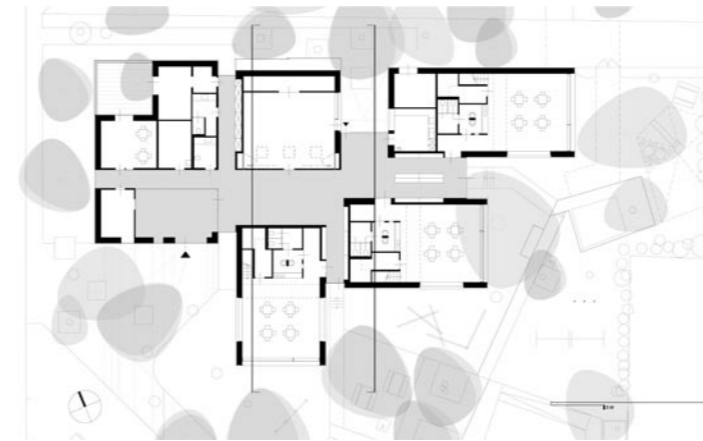
Both classrooms and activity area branch out from the foyer which, clad in larchwood, maintains continuity with the exterior of the building.

The multi-purpose foyer is accessible to the classrooms and the gymnasium. This enables classes to be conducted discretely so that different kinds of activities can take place simultaneously, for special occasions, however, the flexible dividing wall between the gymnasium and the foyer can be opened to provide a large events room, the kindergarten's interior harmonises with the environment by being clad in larchwood. Load bearing walls of spruce cross-laminated timber are faced with triple layered spruce panels finished with a bright white varnish.

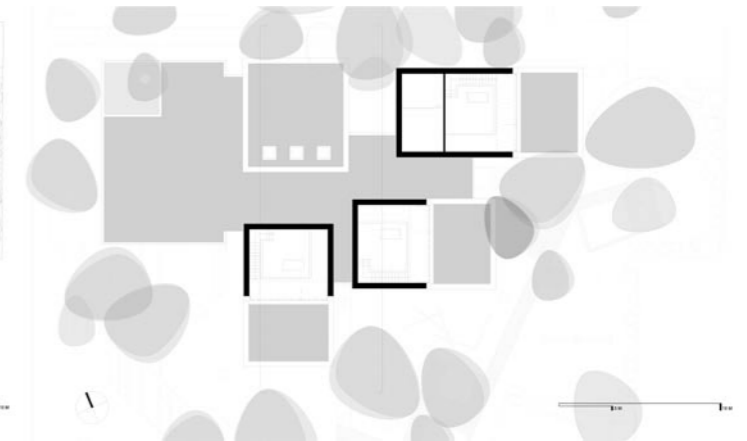
Each classroom has a large panoramic window looking onto the chestnut trees. Windows are set at child's-eye level with ample lower sills doubling as benches.



总平面图 Site Plan



一层平面图 Ground Floor Plan



二层平面图 First Floor Plan



