



The kindergarten is located in a grove of striking chestnut trees. Its rustic design celebrates a sense of open space and connection with its lovely environment. To meet the various needs of the children, the building is organised as a series of structures, each connected visually with the trees. Classrooms are organised around a hallway which gives onto a foyer affording floor to ceiling panoramic views of the encircling chestnuts.

Both classrooms and activity area branch out from the foyer which, clad in larchwood, maintains continuity with the exterior of the building.

The multi-purpose foyer is accessible to the classrooms and the gymnasium. This enables classes to be conducted discretely so that different kinds of activity can take place simultaneously.

For special occasions, however, the flexible dividing wall between the gymnasium and the foyer can be opened to provide a large events room.

The kindergarten's interior harmonises with the environment by being clad in larchwood. Load bearing walls of spruce cross-laminated timber are faced with triple layered spruce panels finished with a bright white varnish.

Each classroom has a large panoramic window looking onto the chestnut trees. Windows are set at child's-eye level with ample lower sills doubling as benches. Unlike these airy classrooms, the gallery, lit by a skylight through which the tops of trees can be glimpsed, offers a more intimate experience.

exterior

If the upright trunks of the old trees suggest strength and perseverance, these characteristics are expressed in the language of the building with its preponderance of wood. Footbridges and terraces link the classrooms, imparting a sense of well-being.

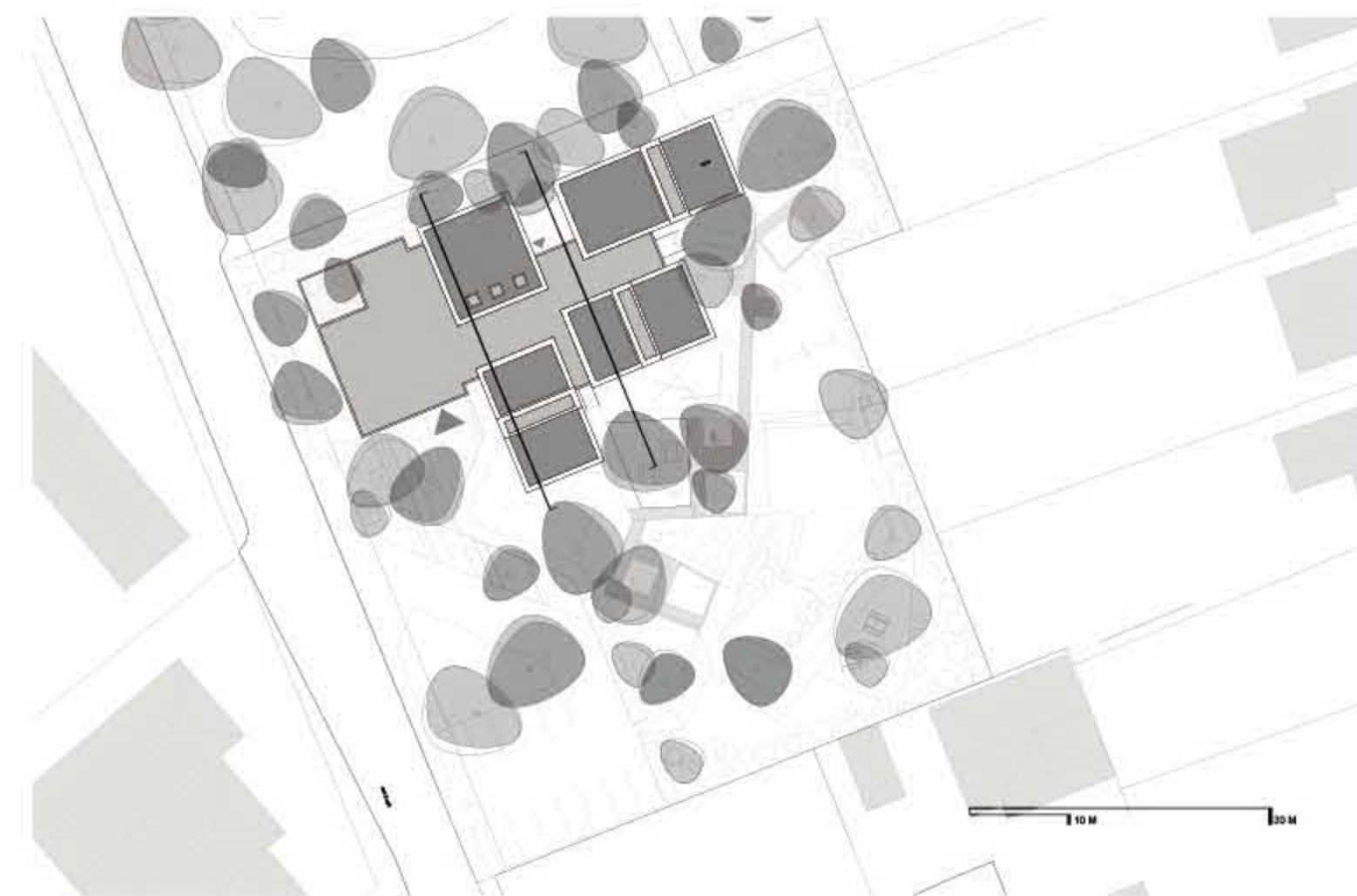
Three themed play areas cluster about a garden: Balance and Equilibrium, Calm and Nature, and Sand and Water.

technology

Conceived as a low-energy building, the school is heated in winter, cooled in summer, by a ground water heat pump feeding under floor piping. CO2 concentration controlled ventilation ensures optimum air quality.

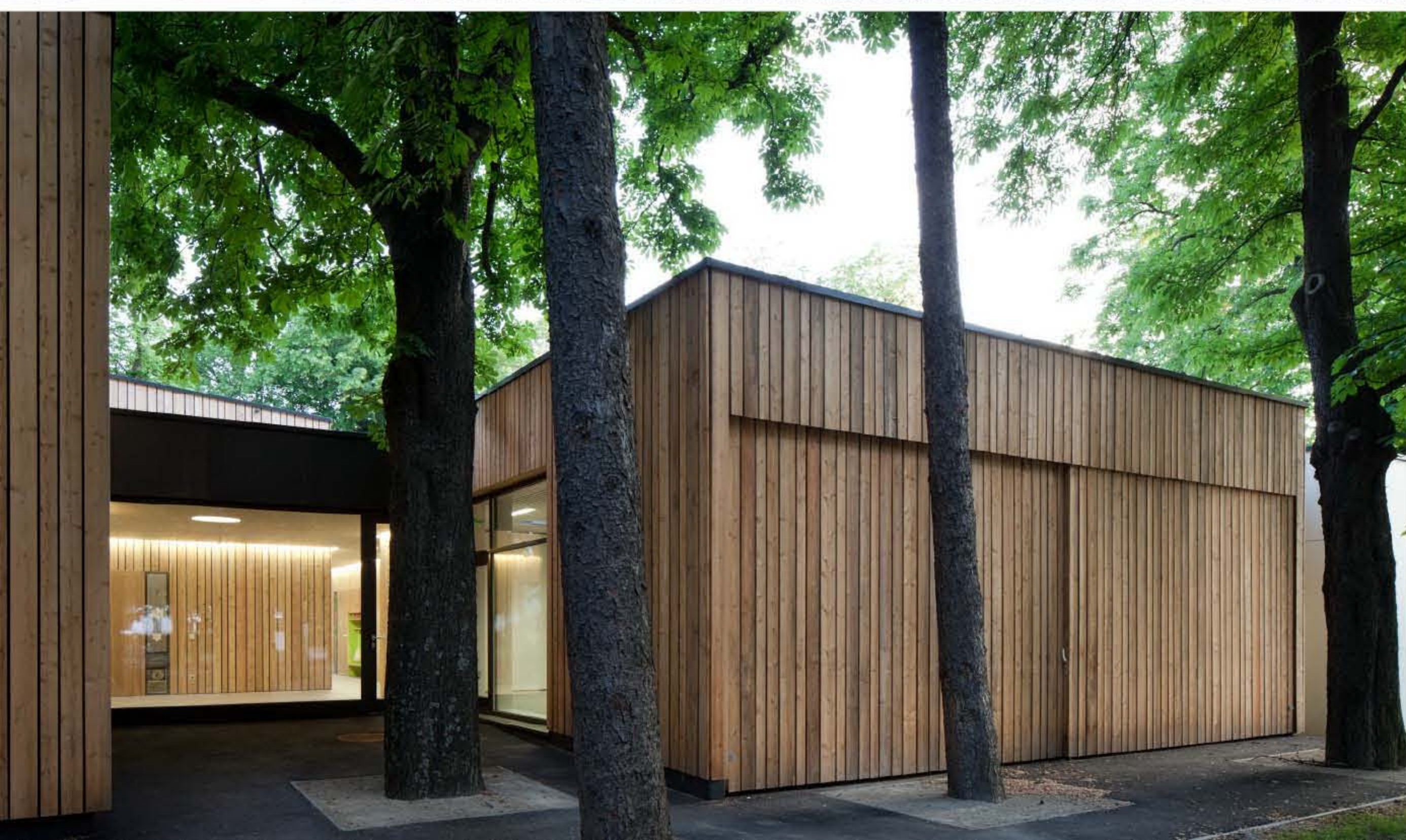


# "Freispiel" - Kindergarten V Guntramsdorf

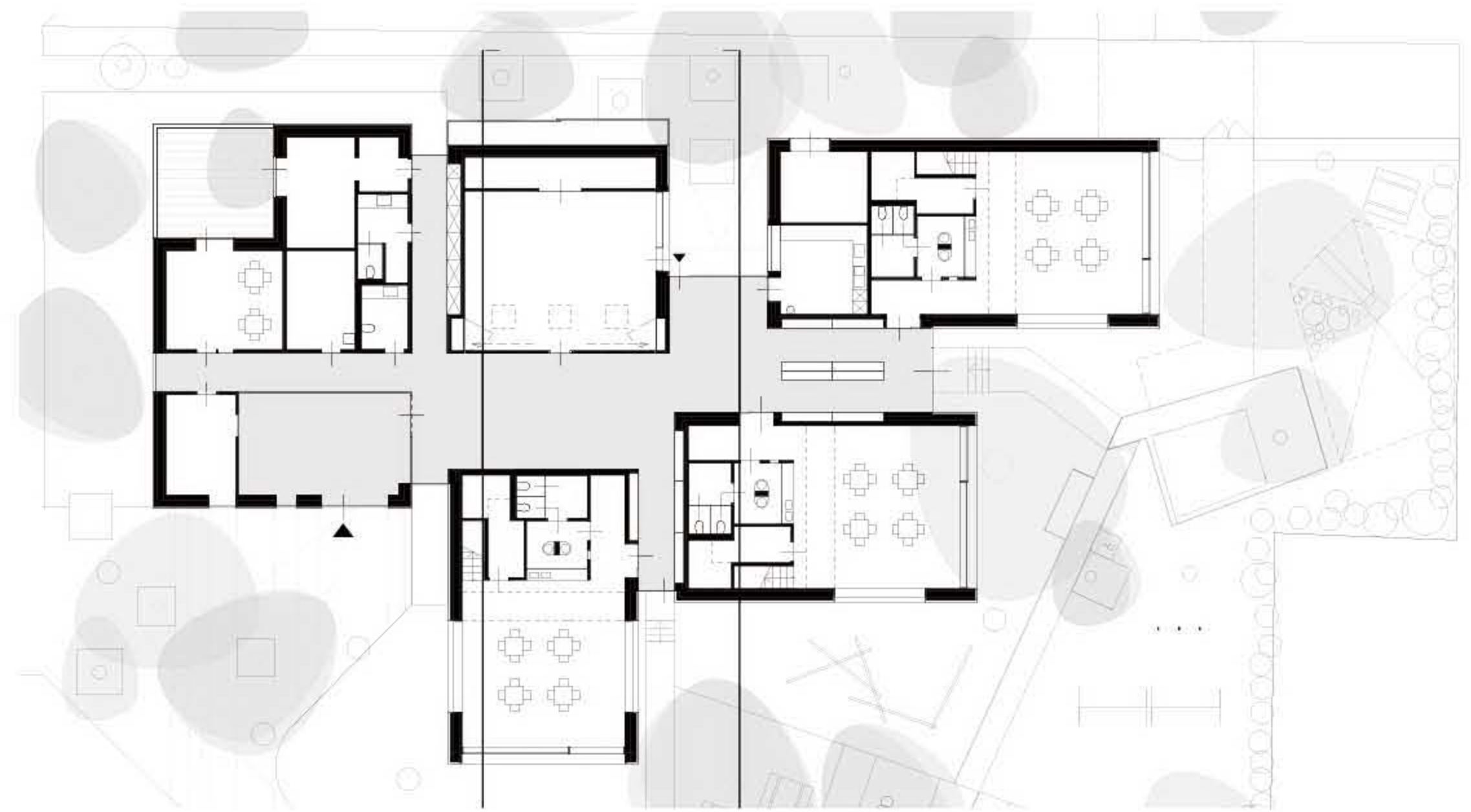


Architects g.o.y.a. group of young architects  
 Project Leader Paul J.E. Preiss  
 Location Guntramsdorf, Austria  
 Area 730 m<sup>2</sup>  
 Photographer Kurt Hörbst









该幼儿园坐落在一片显眼的板栗树林中。其质朴的设计风格颂扬了空旷感以及建筑与可爱的自然环境间的和谐。为满足孩子们不同的需要，该幼儿园由一系列结构组成。每一个结构都与树木相连。在一条通向门厅的走廊旁是教室，透过该门厅，人们可以看到周围板栗树从下至上的全貌。

教室和活动区从被落叶松覆盖的门厅向外伸展，保持了与外部的延续。这个多功能门厅可以通向教室和健身房。使得不同的课程可以分开上以便同时进行各种不同的活动。然而，在健身房和门厅之间的活动墙也可以打开以便提供更大的空间，供特殊场合使用。幼儿园内部与覆盖了落叶松的周围环境非常和谐。整洁漂亮的压层木承重墙对面是整洁漂亮的带着亮白色光泽表面的三层嵌板。每一间教室都有一大扇窗户，透过窗户人们可以看到板栗树。窗户设在与孩子视线相当的高度上，低矮宽阔的窗台可以当作长凳使用。与通风的教室不同，由天窗提供光线的画廊提供了更为亲密的感受。通过天窗人们可以看到树梢。

室外  
如果大树笔直的树干象征着力量与不屈，这些特点也是通过装有大量木材的建筑语言表达出来的。人行桥和一排房屋连接着教室，让人感觉很舒适。三个主题游乐区域簇拥在一座花园的周围，其主题为：平衡与安宁，平静与自然，沙子和水。

技术  
作为低能耗而构想出来的这座学校受地热控制，冬暖夏凉。由二氧化碳压缩技术控制的通风系统确保了最适宜的空气品质。

